



# PortCloud

PortCloud is a SharePoint-based ICT system with matching iPhone APP (PortAbility) for facilitating improved exchange of information, cooperation and innovation between ports, callers of ports as well as other stakeholders.

PortCloud is a *maritime cloud* using a common database containing status information of a particular vessel call in a port and the status of any actor or resource involved in handling a vessel in a given port. Any delays and changes regarding vessels and recourses are updated in the common database, and are made available for other users. PortCloud provides the opportunity to optimize the infrastructure and reduce delays, waiting time and fuel consumption.

## Overall PortCloud benefits:

- Enable ports to work digitally with the stakeholders represented in each port
- Enable ICT-ports to exchange both structured and unstructured information about vessels, calls, events and more
- Provide a modern IT solution/framework to stakeholders – which they can use for cost effective collaboration and management baseline tool in their business

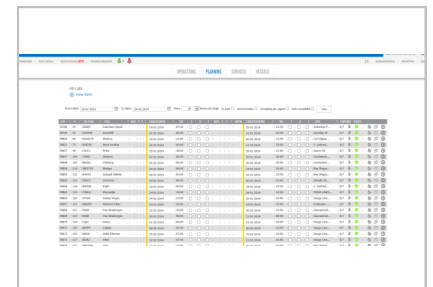
## Port2Port values:

- Real-time ETA/ETD information
- Exchange of black-list information (vessel)
- Collaboration on cases/events
- Sharing of regulatory documents

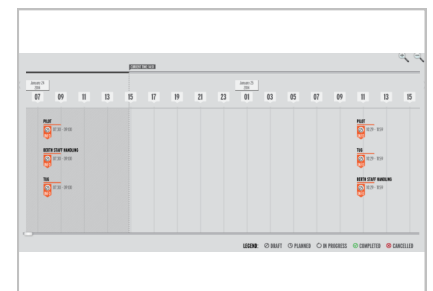
## Vessel values:

- Updated information on port status (special events in the port, labour conflicts, major accidents which affects the port, etc.)
- Access to service catalogue and ordering
- Complete call overview
- Case/events management
- Handling of regulatory documents, certificates, crew lists, etc.

For more info go to <http://balticseahubspokes.eu>



**Maritime Cloud** | Instead of each stakeholder having its own individual IT solution, PortCloud functions as a common “information hub” for all stakeholders.



**Logistics** | In PortCloud each call is considered a project, where the different stakeholders can coordinate their services and resources to avoid double bookings, waiting time and to help making the call proceed according to the plan.



## Interested in PortCloud?

Are you interested in hearing more about PortCloud and maybe getting PortCloud in your Port? Please contact :

Project Manager Dorthe Stuhr on tel.+(46)22989919 or e-mail: [dos@winpoint.dk](mailto:dos@winpoint.dk)

